

# Azimut's Position in the James Bay Region, Québec

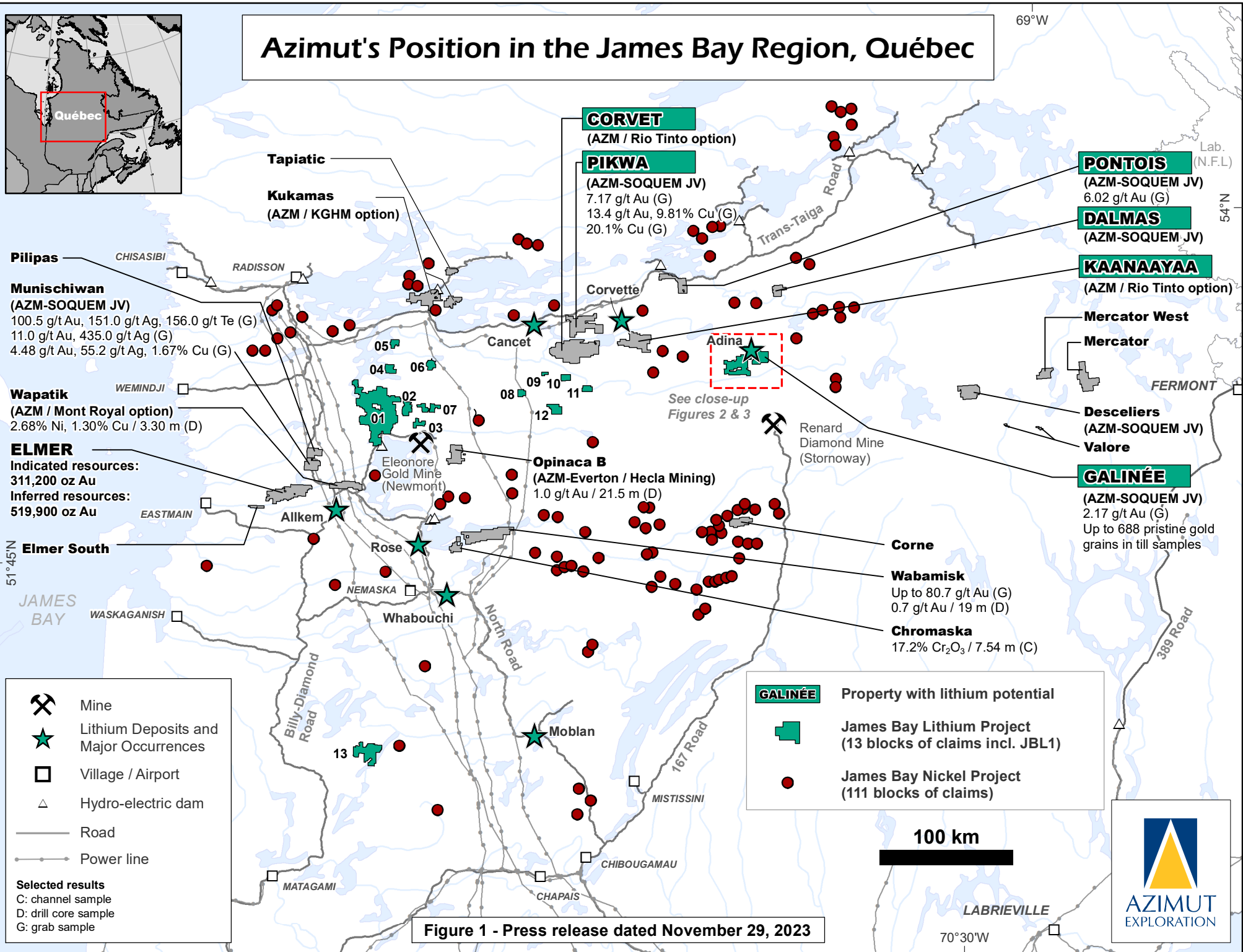
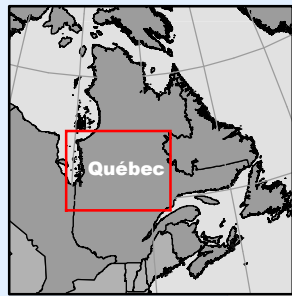


Figure 1 - Press release dated November 29, 2023



# Galinée Property Area, James Bay Region, Québec

**Azimut-SOQUEM Discovery**

See close-up  
Figure 7

See close-up  
Figures 4 to 6

Adina Zone  
Adina Property  
(Winsome Resources)

**Galinée Property**  
(Azimut-SOQUEM JV)

**LBS Geochemistry (846 samples)**  
Li (percentile)

- 100% • LBS sample
- 99%
- 96% - 98%
- 91% - 95%
- 86% - 90%
- 81% - 85%
- 71% - 80%
- 61% - 70%
- 51% - 60%
- 1% - 50%

Data: Azimut,  
MRNF (Québec) and other  
data in the public domain.

**Lithium**  
**Lake-Bottom Sediment Geochemistry**

**5 km**



**Figure 2 - Press release dated November 29, 2023**

655,000

645,000

685,000

5,915,000

5,910,000

5,895,000

5,890,000

# Galinée Property Area, James Bay Region, Québec

## Azimut-SOQUEM Discovery

See close-up  
Figures 4 to 6

See close-up  
Figure 7

Adina Zone  
Adina Property  
(Winsome Resources)

**Galinée Property**  
(Azimut-SOQUEM JV)

### LBS Geochemistry (846 samples) Cs (percentile)

- 100% • LBS sample
- 99%
- 96% - 98%
- 91% - 95%
- 86% - 90%
- 81% - 85%
- 71% - 80%
- 61% - 70%
- 51% - 60%
- 1% - 50%

Data: Azimut,  
MRNF (Québec) and other  
data in the public domain.

## Cesium Lake-Bottom Sediment Geochemistry

5 km



Figure 3 - Press release dated November 29, 2023

655,000

645,000

685,000

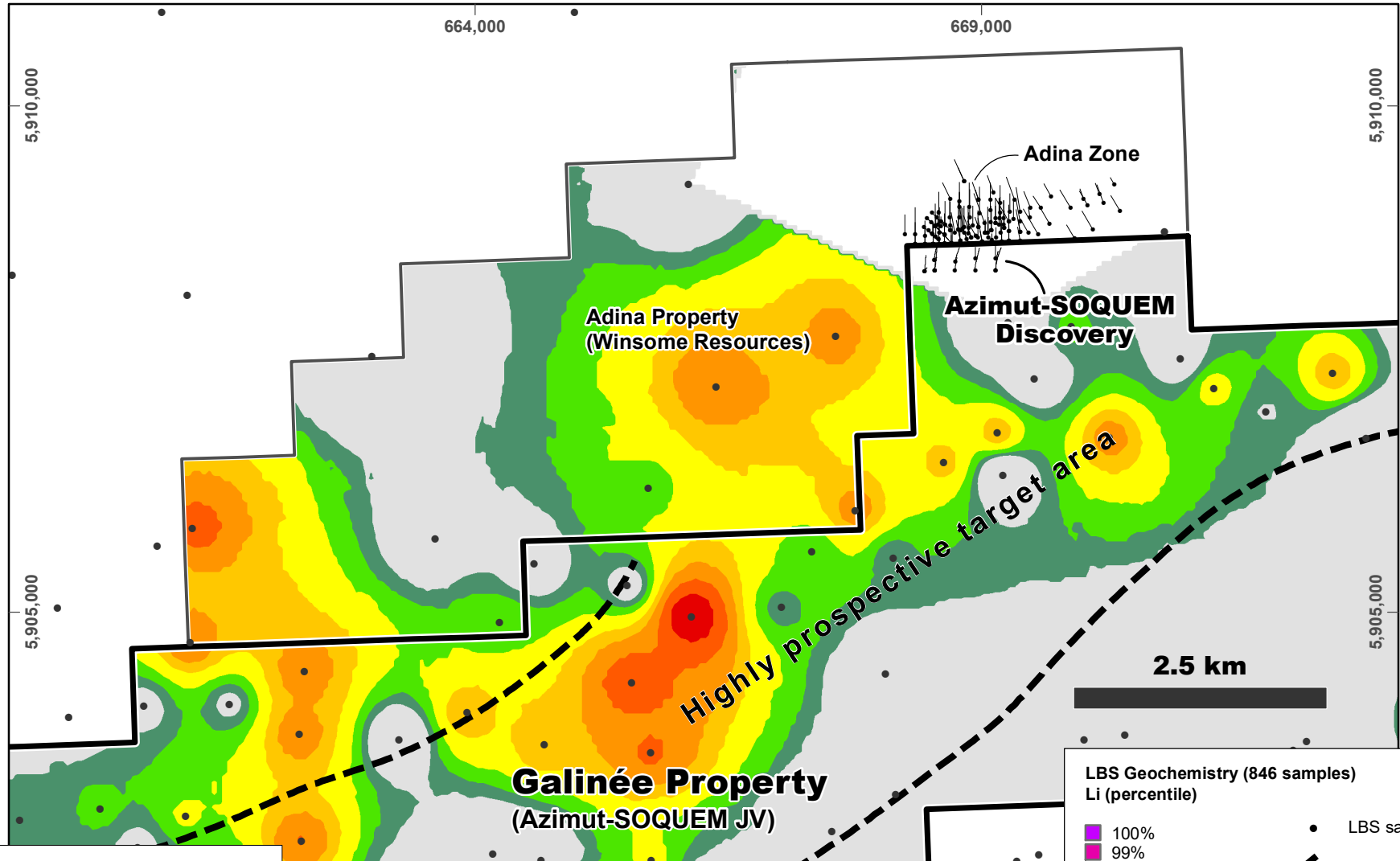
5,915,000

5,910,000

5,895,000

5,890,000

# Galinée Property Area, James Bay Region, Québec



**Lithium**  
**Lake-Bottom Sediment Geochemistry**

Figure 4 - Press release dated November 29, 2023

**LBS Geochemistry (846 samples)**  
**Li (percentile)**

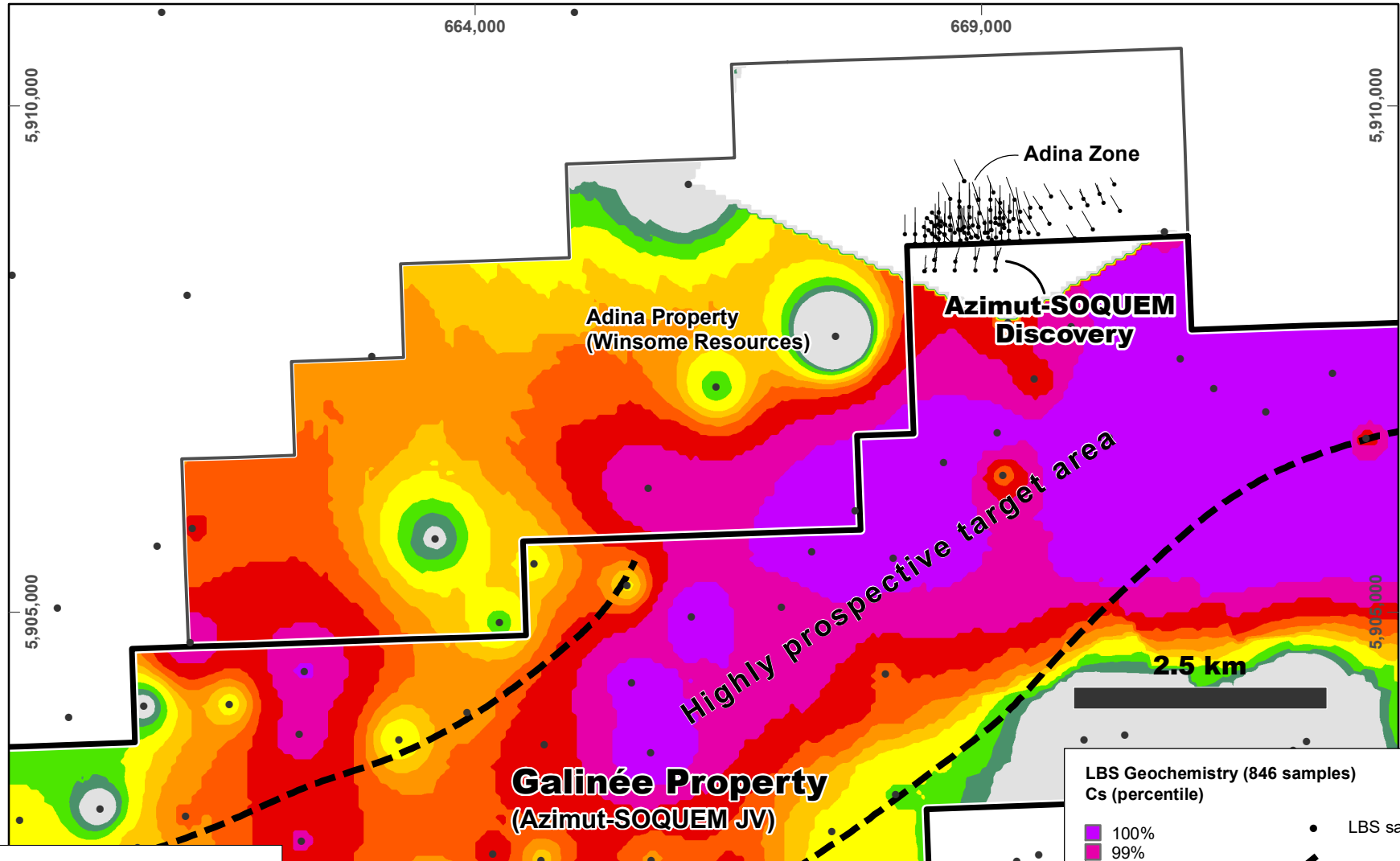
100%
99%
96% - 98%
91% - 95%
86% - 90%
81% - 85%
71% - 80%
61% - 70%
51% - 60%
1% - 50%

● LBS sample

--- 20-km prospective trend

**Data:** Azimut, MRNF (Québec) and other data in the public domain.

# Galinée Property Area, James Bay Region, Québec



**LBS Geochemistry (846 samples)  
Cs (percentile)**

100%
99%
96% - 98%
91% - 95%
86% - 90%
81% - 85%
71% - 80%
61% - 70%
51% - 60%
1% - 50%

● LBS sample

--- 20-km prospective trend

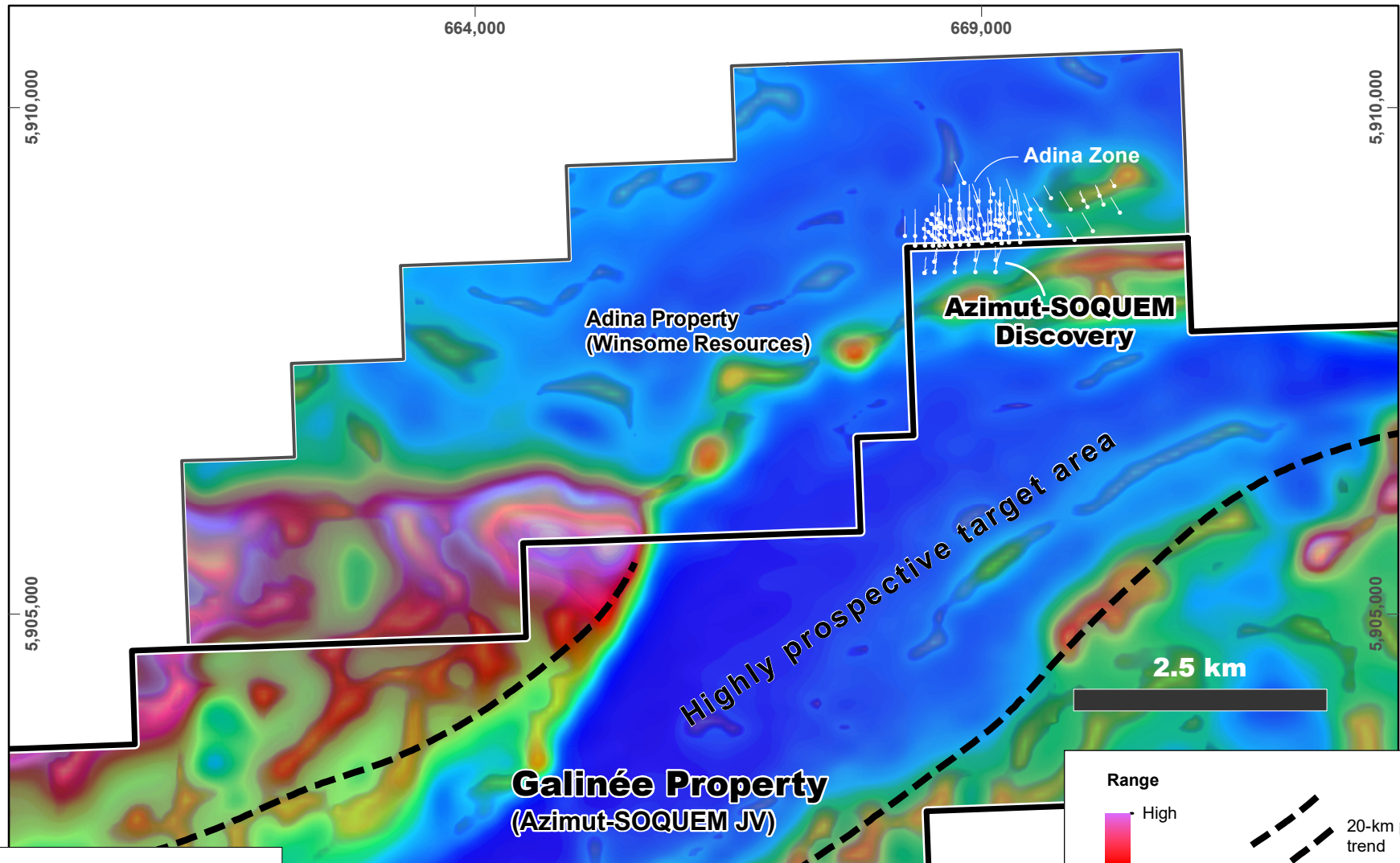
**Data:** Azimut, MRNF (Québec) and other data in the public domain.



**Cesium  
Lake-Bottom Sediment Geochemistry**

Figure 5 - Press release dated November 29, 2023

# Galinée Property Area, James Bay Region, Québec

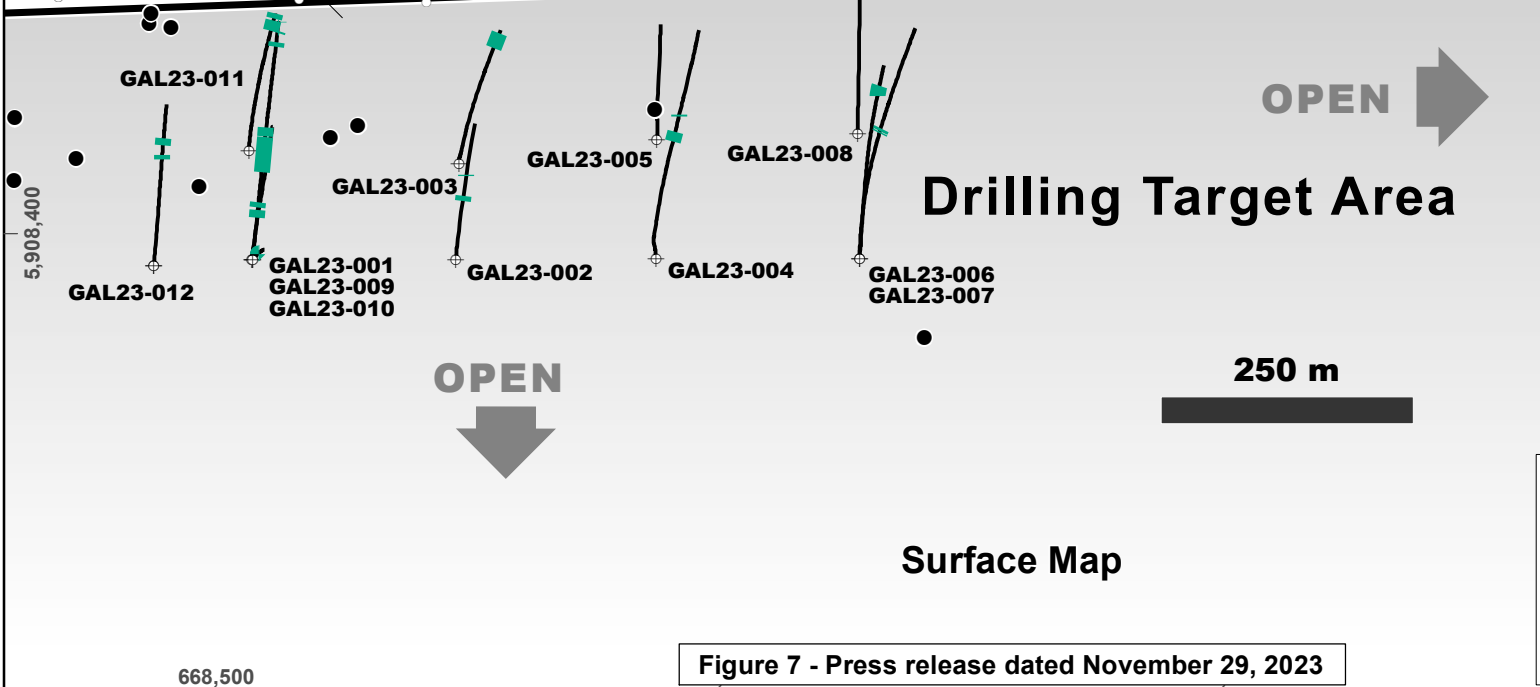
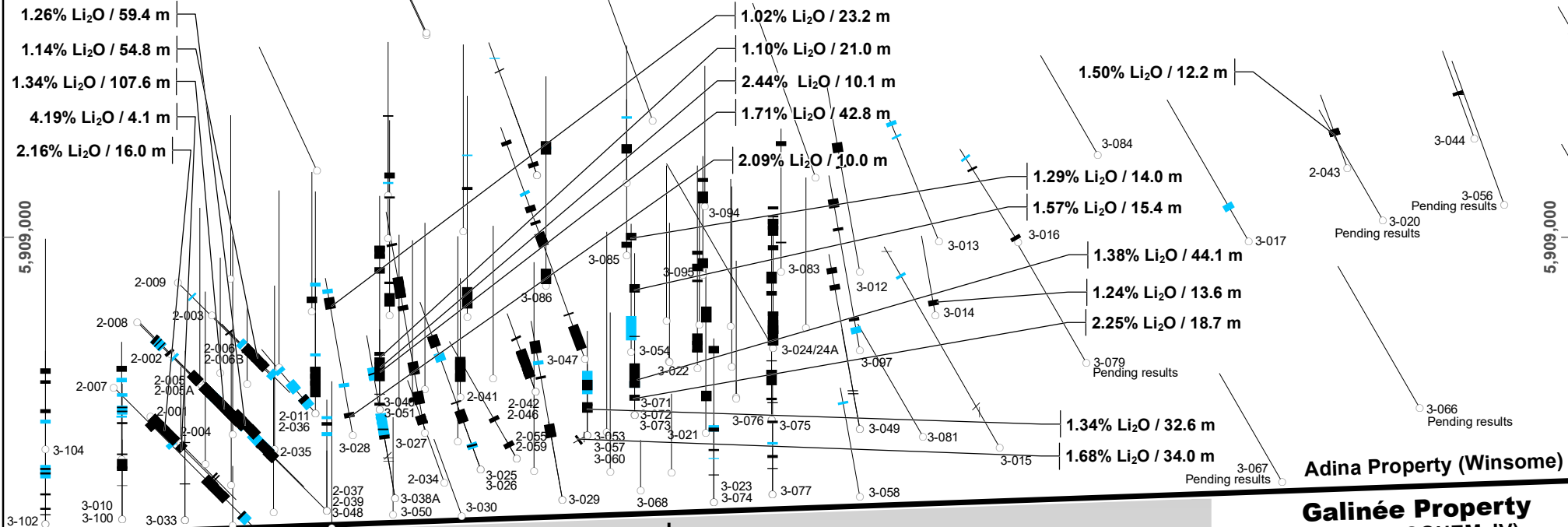


Magnetic Regional Survey

Figure 6 - Press release dated November 29, 2023

Data: Azimut, MRNF (Québec) and other data in the public domain.  
Processing: Proprietary processing.

# Galinée-Adina close-up, James Bay Region, Québec

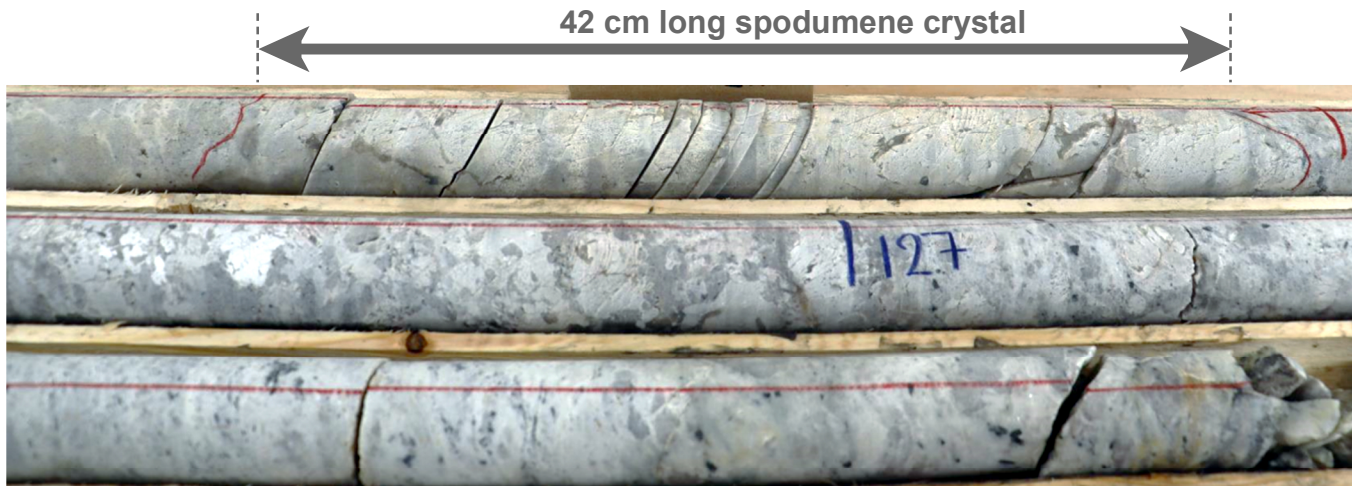


- Spodumene-bearing pegmatite boulder
- ⚡ Azimut drilling program (2023)
- > 1% Li<sub>2</sub>O
- < 1% Li<sub>2</sub>O
- Spodumene-bearing pegmatite

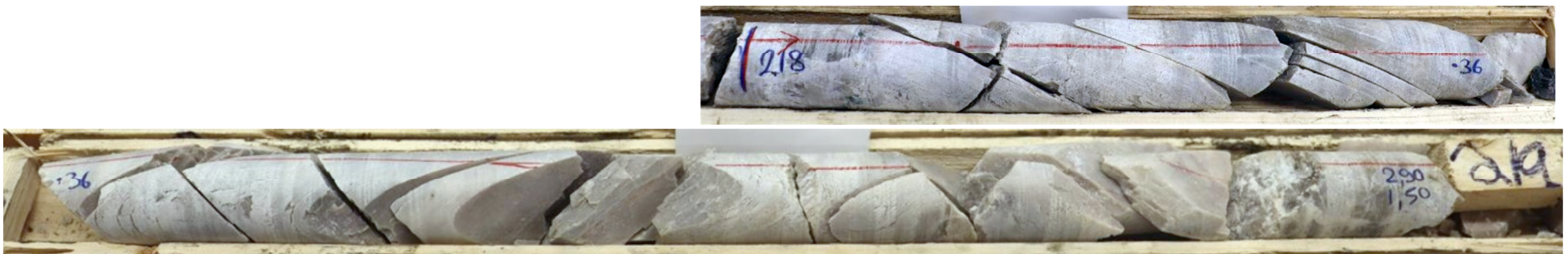
From public data (Azimut processing)

Figure 7 - Press release dated November 29, 2023

# Galinée Property, James Bay Region, Québec



**Photo 1:** Hole GAL23-010 at 125.5 m.



**Photo 2:** Hole GAL23-011: 218 – 219 m. Coarse spodumene crystal.



## Drill Hole Coordinates Galinée Property, James Bay Region, Québec

Hole #	UTM zone 18 - NAD83		Elevation (m)	Azimuth (°)	Dip (°)	Length (m)
	Easting	Northing				
GAL23-001	668,536	5,908,378	504	360	-55	372.0
GAL23-002	668,736	5,908,372	510	360	-55	253.8
GAL23-003	668,736	5,908,474	511	360	-55	231.0
GAL23-004	668,935	5,908,374	517	360	-55	396.0
GAL23-005	668,936	5,908,501	518	360	-55	195.0
GAL23-006	669,134	5,908,375	507	360	-55	401.6
GAL23-007	669,134	5,908,375	507	360	-45	270.0
GAL23-008	669,134	5,908,502	514	360	-55	231.0
GAL23-009	668,536	5,908,374	504	360	-70	375.0
GAL23-010	668,536	5,908,374	504	360	-85	172.4
GAL23-011	668,532	5,908,483	207	360	-60	246.0
GAL23-012	668,438	5,908,368	502	360	-55	291.0

**Table 1 - Press release dated November 29, 2023**

