

Elmer Gold Property – Patwon Discovery – James Bay Region, Quebec

Table 2 – Press Release of January 14, 2020



Hole ELM19-001: Native gold in quartz vein at 87.15 m.
Sample Y104333: **18.4 g/t Au over 0.80 m**



Hole ELM19-002: Native gold in an extensional quartz vein at 39.9 m.
Sample Y103446: **19.15 g/t Au over 0.50 m**



Hole ELM19-003: Native gold in quartz carbonate veinlet subparallel to schistosity at 34.6 m.
Sample Y103576: **254.0 g/t Au over 0.50 m**



Hole ELM19-004: Native gold in milky quartz vein with tourmaline selvages at 16.2 m.
Sample Y103725 : **28.7 g/t Au over 0.50 m**

All indicated depths are along holes. Photos are of selected intervals and are not necessarily representative of the mineralization hosted on the property.



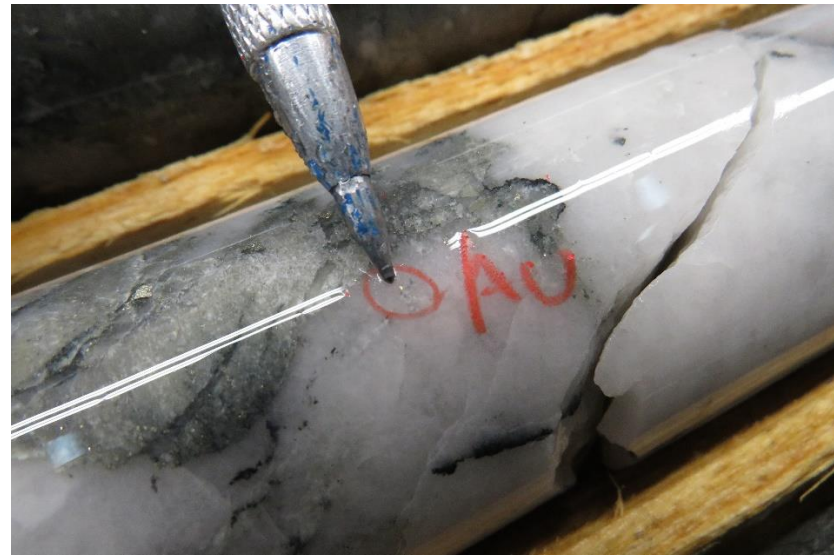
Hole ELM19-005: Native gold in a quartz vein at 28.47 m with up to 20% pyrite.
Sample Y103830: **29.8 g/t Au over 0.50 m**



Hole ELM19-006: Native gold grain in a pyritic stringer in felsic intrusion at 70.7 m.
Sample Y103973: **121.0 g/t Au over 0.50 m**



Hole ELM19-006: Native gold in a quartz chlorite vein hosted by a porphyritic felsic intrusion at 104.7 m.
Sample A0367051: **64.9 g/t Au over 0.50 m**



Hole ELM-007: Native gold in a quartz vein at 37.5 m with chloritic selvages and trace of tourmaline.
Sample A0367118 : **93.6 g/t Au over 0.50 m**

All indicated depths are along holes. Photos are of selected intervals and are not necessarily representative of the mineralization hosted on the property.